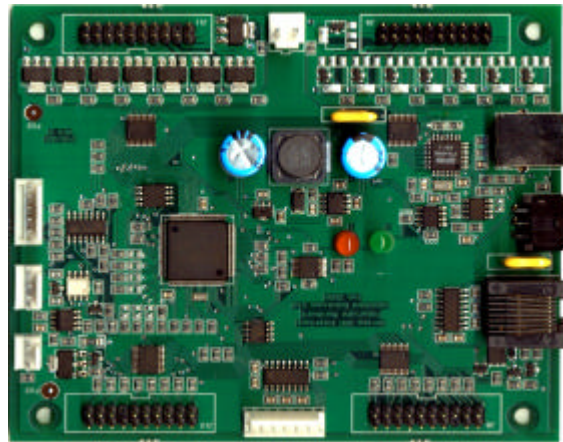
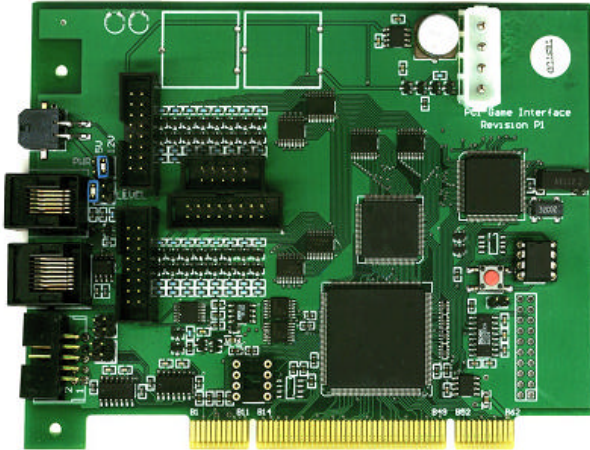


# Connecting PCs to Cash Equipment

Aardvark Embedded  
Solutions



## Milan Intelligent PC interface, product code MIMHEI Installation CD - Contents

This single distribution supports our two Intelligent Money handling Interfaces, the USB interface unit, sold by Money Controls as Paylink and our original the PCI interface unit.

The top level folder on the CD or on the downloaded and unzipped SDK distribution contains the files you will need to actually install the hardware. Very comprehensive details are given **MilanPayLinkFullTechnicalManual.pdf** for the Paylink unit and **PCITechnicalManual.pdf** for the PCI unit.

Apart from details associated with the specific hardware interface, the usage of the two different interfaces is identical. The DLL installed by this process supports the Application Program interface (API) that has been defined to communicate with the interface and hence its external peripherals.

This same CD / distribution contains all the resources needed by a programmer in order to use this DLL. The (sub) folder SDK contains the files you will need to write programs that interface to the hardware.

For 'C' these are aesimhei.h, ImheiEvent.h and aesimhei.lib. If you want to use Delphi then the units aesimhei.pas and ImheiEvent.pas should be included in the project. For VB users there is the aesimhei.bas file to include in your project to describe the DLL functions.

The SDK folder also contains the latest interface description manual ***Milan-Paylink User Manual.pdf*** together with the utility program diagnostics, MilanDiag.exe, which can be used to help diagnose any problems with the use of the interface. Full details on the use of this diagnostics program are available in a separate manual MilanUtilities.pdf.

In sub folders, below the SDK folder, are three example projects, complete with "ready to run" programs that will allow the functioning of a system to be proven before the application development is started

The entire source to the AES standard demonstration program that you may have seen in action, is the program "Demo" in the folder "Delphi Demo". To show how simple the basic interface is there are two very simple command line programs in CoinRead - which waits to read coins and PayOut - which pays out some coins.